



1952 - 2017

JOHN HOWARD SOCIETY OF NEW BRUNSWICK,
SAINT JOHN BRANCH INC.

Annual Report 2016-17

“Supporting Communities, Transforming Lives”

We exist to promote and support healthy and safe communities, by mobilizing partners and engaging families and individuals, while addressing the social conditions that give rise to crime.

John Howard
THE JOHN HOWARD SOCIETY OF SAINT JOHN
La SOCIÉTÉ JOHN HOWARD DE SAINT JOHN

JHSSJ HISTORY

Over the years, members of the community have watched as the JHSSJ has grown from a dedicated core of volunteers to one of New Brunswick's most comprehensive criminal and social justice agencies, providing professional assistance to offenders, their families, at risk and at need populations within a continuum of healthy and safe communities.

Pro-active Program Services were introduced in 1996 with an intent at influencing the identified social factors and precursors to criminal activity. As a result the Resiliency Centre was implemented with a strong dedicated volunteer commitment to the provision of program services to youth and families as well as training programs, seminars and conferences to staff within the helping profession.

The JHSSI was commended on its ability to sustain social development projects through commitment to issues of local concern, investment in capacity building, partnerships, linkages and sharing of resources.

The JHSSI continues to promote a just society by challenging injustice—fostering individual rights to equitable treatment, support for their human rights, and opportunities for fair allocation of community resources.

The past year has been a busy one. As the John Howard Society in Saint John ushered in its 65th year, significant agency changes are underway. Most importantly is a name change from "The John Howard Society of New Brunswick, Saint John Branch Inc." to "The John Howard Society of New Brunswick, Fundy Region Inc." to better reflect our geographical region. We now provide services from Sussex to St. Stephen. The new name reflects our regional diversity. We are also preparing to embark on our first building project – Solid Foundations – a 12-unit apartment building for homeless persons and office space in St. Stephen.

We also look forward to some program service announcements in the near future on projects we have been working on for the past year. As such, a three-year contract for Skills Link would provide a transition to employment program for young adults. We also are hopeful to begin a youth program for the at-risk youth in our community. Finally, we are anticipating a project for youth that recognizes the dangers of driving while under the influence of marijuana.

This is a special annual meeting which is for the most part for the members of the John Howard Society family in our agency. To you, I have this special message:

We are blessed to have an amazing team of staff, volunteers, funders and supporters that have worked together for many collective years to realize real and positive impact for some of our community's most vulnerable members—as president, I thank you.

For a community to be successful, all of our citizens must be afforded the opportunity to move to a place of health and safety. This cannot be accomplished by any one agency or government department. It takes the entire community to come together in meaningful ways over a long period of time. Again, I emphasize the lives we are honored to work with over 65 years are complex. Many of our clients have significant mental health issues that require out-of-home residential care and sustained efforts as they work towards healthy, self-directed lives.

Thank you to all who have contributed to the success of our agency. More importantly, thank you for your trust and energy as we provide hope and success for the clients who are courageous enough to walk through our doors and ask for your help. This year marks our 65th year of operation as highlighted at our celebration dinner. Our goal, of course, is to “in appreciation”, honor our past by continuing to build a healthy and safe community contributing to crime reduction. This, I believe, is a goal that everyone can support.

Mark Palmer

President Board of Directors

John Howard Society of New Brunswick, Fundy Region Inc.



Table of Contents

**President's
Report**

Page 2

**Table of
Contents**

Page 3

**Residential
Services**

Page 4

**Residential
Services**

Page 5

**Education /
Employment**

Page 6

**Skill
Development**

Page 7

**Professional
Counselling**

Page 8

**Youth, Adult &
Family Services**

Page 9

**Professional
Development**

Page 10

**Social
Development**

Page 11

**Social
Development**

Page 12

**Social
Activities**

Page 13

**Advocacy
Activities**

Page 14

**Community
Impact**

Page 15

**Picture Mosaic /
Awards /Sponsors
Offices**

Page 16 - 17



HOUSING FIRST Case Managed Support Model

RESIDENTIAL

MENTAL HEALTH ADULT RESIDENTIAL SERVICES

People with mental health difficulties are more vulnerable to homelessness and imprisonment and require specialized supports to enhance opportunity for a safe and healthy lifestyle. Mental health can affect people of all ages and social background. It can affect people to different degrees, with some people requiring constant support and supervision.

Our homes are much more than a physical building. Secure, caring, stable housing is the key support for our clients with a mental health condition and with case managed treatment plans, opportunities for recovery and maintaining good mental health is enhanced. Our specialized services, which wrap around the homes, assist with serious, enduring mental illness and associated behavioural disturbances by facilitating the learning of everyday skills that are needed to live successfully in the community.

People with severe mental illnesses are more likely to be victims, rather than perpetrators, of violent crime



MALONEY HOME



WEBSTER HOME



GRANT HOME



ADELAIDE HOME

37

RESIDENTS

100% YOUTH

- ⇒ Re-engaged in an Educational Program
- ⇒ Engaged in Community Activities
- ⇒ Family Re-unification

100% ADULTS

- Engaged in an :
- ⇒ Education
 - ⇒ Volunteerism
 - ⇒ Employment



DOUGLAS LAKE YOUTH
TREATMENT CENTRE

SPECIALIZED YOUTH TREATMENT HOME

Specialized Youth Treatment homes, service young people with serious complicated behavioral difficulties and mental illnesses, who have not responded to other forms of treatment. Services are designed to decrease symptoms and improving coping mechanisms and includes development of long-term, multi-disciplinary support and treatment plans. Inter-disciplinary teams aim to empower, educate and support youth and their families to better cope with ongoing and complex needs in order to prevent the high cost need for emergency services, hospitalization and institutionalization.

TRANSITIONAL APARTMENTS

Transitional housing provides supportive, temporary accommodation that bridges the gap from homelessness to permanent housing by offering structure, supervision, support (for addictions and mental health, for instance), life skills, and in some cases, education and training. The aim is to address critical issues necessary to maintain permanent housing and maximize self-sufficiency – developing stable social connections and neighbourhood supports.



BEFORE



AFTER

\$60,000 in upgrades for Peter Street Transitional Apartments



HOUSING FIRST Case Managed Support Model

JHS has applied the Housing First Principal and Supportive Living Models in the development of housing initiatives for episodic and chronic homeless individuals who have multiple challenges and a mental illness for over 9 years. These housing projects were one of a number of activities the JHS has undertaken to effect poverty in Southern NB including becoming a lead agency in promoting a provincial strategy to end poverty.



“EMERGENCY TEMPORARY ACCOMMODATION”

The John Howard in Charlotte County provided case management support for single adults without children needing immediate emergency shelter in a hotel as they transition to the department of Social Development for enhanced housing services.

COMING IN 2020

“SOLID FOUNDATIONS SINGLE OCCUPANCY APARTMENTS”

JHS is responding to the housing and support needs of individuals who are experiencing episodic and/or chronic homelessness and present a combination of factors such as poverty, social exclusion, wage and income inequality, cultural and family background, level of education and other economic and social factors that may affect an individual's propensity to commit crimes in St. Stephen and the surrounding area.

Homelessness can be both a cause and a consequence of involvement with the justice system. Individuals commit more offences after becoming homeless than before and, in a reciprocal manner, incarceration contributes to homelessness through the destabilization of housing, unemployment, and the erosion of human rights.

CORRECTIONAL RESIDENTIAL SERVICES

Our halfway house creates an important bridge between institutional care and the community. The residence provides needed rehabilitative and residential services and opportunities for unique and innovative programming that is tailored to a clients needs while maintaining community safety. Offenders live in the halfway house while they work, find a job, go to school or attend treatment or other programming.



33%

EMPLOYED

95

RESIDENTS

25 TA/ 70 PAROLEES

18%

INSTITUTIONAL RETURNS
(BREACH OF CONDITIONS)

2%

RECIDIVISM



EDUCATION/ EMPLOYMENT

EDUCATION SERVICES

The unemployment rate is above 20% for people with less than nine years of education and people who have not completed their high school studies. JHS provides 2 educational programs (GED Training & Workplace Essential Skills Training) to assist adults and youth in obtaining their grade 12 equivalency. Workplace Essential Skills (WES) training is aimed at helping adults who are employed or seeking employment and require additional essential skills to succeed. Learning activities focus on the specific tasks associated with either an individual's current job or desired occupation.

20%
11 GED Graduates
31%
29 Advanced
Educational Levels

57
CALP Participants
38
WES Participants



Employment Counselling
130 Participants

Transition to Employment
69 Participants

EMPLOYMENT COUNSELLING & TRANSITION TO WORK SERVICES

A full continuum of employment based services consisting of employment counselling, transition to work services, job shadowing & work placements, apprenticeships and career opportunities services. Specific employment services each target certain vulnerable populations such as offenders, youth at risk, and individuals with a mental illness.

**Career Opportunity Program for Youth secured over 3 years in
Saint John & Charlotte County**

RESEARCHED BEST PRACTICE —TRANSITION BACK SERVICES

John Howard Society responded to an interest in the development of a "best practice" TIOW program by incorporating the latest research in re-engaging clients over the age of 55 to the workforce in the Miramichi area. This "Best Practice" model was built on the strengths of existing older worker



initiatives and services provided across Canada with an adaptable and customizable approach complimented by a screening tool to better address the individual needs of a varied population.

After the initial pilot project indicated successful outcomes the program was implemented in Charlotte County.

**80
JOBS**

253
Articles of Clothing
Provided

**MOORE'S CANADIAN
Suit Drive**
Help others find their strong suit™



ADDRESSING Economic Vulnerability & Social Exclusion

SOCIAL, EMOTIONAL & COGNITIVE SKILL DEVELOPMENT

Assisting vulnerable populations in gaining basic life skills and enhancing their social emotional development allows for opportunities to manage and live a better quality of life. John Howard understands the importance of possessing these skills when life's inevitable difficulties and adversities hit us. It lessens a person's chance of overusing substances, engaging in addictive behaviors, and experiencing anxiety, despair and hopelessness. When a person has the proper tools and strategies at their disposal, they have more control over their life therefore happier and more productive.

123

CLIENTS

SOCIAL /EMOTIONAL
SKILLS

67

CLIENTS

COGNITIVE
SKILLS



33

CLIENTS

COGNITIVE
BEHAVIORAL
COUNSELLING

COGNITIVE BEHAVIORAL THERAPY

Cognitive Behavioral Therapy is based on the idea that our thoughts cause our feelings and behaviors, not external things like people, situations and events. The benefit of this fact is that we can change the way we think to feel / act better even if the situation does not change. Thereby, cognitive deficits and distortions characteristic of offenders are learned rather than inherent. Programs for offenders, therefore, emphasize individual accountability and attempt to teach offenders to understand the thinking processes and choices that immediately preceded their criminal behavior.

INDEPENDENT LIVING SKILLS

Independent living skills are those skills necessary to live as independently as possible. Such skills may include but are not limited to: housekeeping, cooking, time management, shopping, laundry, and budgeting. Skills may be related to social/recreational activities such as: utilizing leisure time in a satisfying manner, or knowing where to find appropriate social activities/resources. Motivation for successful entry into the workplace and financial independence is directly related to skill enhancement and becomes the catalyst for self-autonomy.

45

CLIENTS

INDEPENDENT
LIVING SKILLS





ENHANCING Personal Empowerment & Self Autonomy

SOCIAL WORKER / PSYCHOLOGIST COUNSELLING

Specially trained Social Workers and a Psychologist work with clients individually, in families and/or in groups to address developmental issues, addressing and resolving specific problems, making decisions, coping with crisis, developing personal insights and knowledge, working through feelings of inner conflict or improving relationships with others—aimed to facilitate the clients work in ways that respect the client's values, personal resources and capacity for self-determination.

Counselors use professional knowledge and skills to assist people who are experiencing crisis or difficult life changes—concerns that include stress, loss, anger, relationships, mental health, addictions, and other personal issues.



NARATIVE THERAPY (DOMESTIC VIOLENCE)

Integrating narrative ideas and practices into group conversations with men who have perpetrated abuse. Inviting men to take responsibility for stopping abuse and building respectful relationships by using a collaborative approach to conversations about the men's own values.

Programs for offenders, therefore, emphasize individual accountability and attempt to teach offenders to understand the thinking processes and choices that immediately preceeded their criminal behavior.



ANGER MANAGEMENT

Anger management counselling is designed to reduce the feelings and arousal anger creates by allowing individuals to explore the underlying issues and triggers of angry outbursts—reassessing some of the unhelpful beliefs about anger that may have been present in the family, in relationships and how it is impacting quality of life.

Learning to pinpoint frustrations early on and understanding how to use anger in a healthy and safe manner will enable one to cope with injustices and grievances in a way that allows expression of needs while remaining calm and in control.

198

CLIENTS

ANGER
MANAGEMENT

52

CLIENTS

NARRATIVE
THERAPY

274

CLIENTS

PROFESSIONAL
COUNSELLING





YOUTH & FAMILY ENGAGEMENT SERVICES

FAMILY GROUP BASED PROGRAMMING

Resiliency is the ability to bounce back from difficult situations and make healthier choices when coping with life's struggles. Research has shown that some youth are more at risk for problems with school, anti-social behaviour or alcohol and other drugs while others have personal characteristics and supports from their families or communities that help "protect" them from problems and cope successfully with life's challenges.

Positive family relationships and supportive parenting practices are two very important protective factors that support a child's resiliency.



26

FAMILIES
STRENGTHENING
FAMILIES PROGRAM

76%

YOUTH
SUCCESSFUL
COMPLETION

YOUTH & ADULT COMMUNITY SERVICES

ALTERNATIVE MEASURES

Partnered with the Department of Public Safety, the program offers an option diverting the court system that is visible, accountable, and accessible to victims, offenders, and the community. This restorative process includes: creating opportunities for victims, offenders and community members who are willing to meet to discuss the crime.

John Howard provides additional programming surrounding the clients - Theft Deterrence & Substance Awareness Programs are provided free of charge for those clients who would benefit.

COMMUNITY CORRECTIONS

The JHS has long been an advocate for and leader in community corrections. We believe that the vast majority of offenders should be in the community serving their sentences where they can continue to contribute to society and maintain family and social ties. We know from research that the more informed the public is about the circumstances of a case, the more accepting they are of sentences other than incarceration.

JHS provides a strength based approach targeting criminogenic risk factors. Social science literature generally groups key risk factors under five domains: Individual, Family, Peer, School, and Community-related factors.

OVER
100
YOUTH
ALTERNATIVE
MEASURES

OVER
200
ADULTS
ALTERNATIVE
MEASURES

215
ADULTS
COMMUNITY
INTENSIVE SUPPORT

10
YOUTH
INTENSIVE SUPPORT
PROGRAM



ENHANCING COMPETENCIES Knowledge, Skills & Attributes

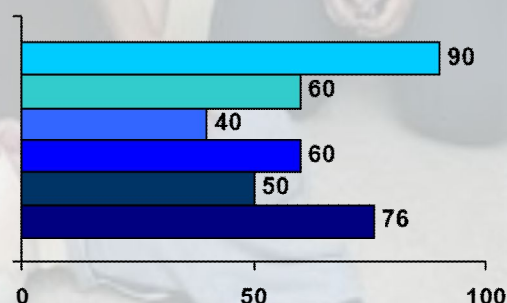
TRAINING SERIES

STANDARDIZED PROFESSIONAL TRAINING

A training series was developed following the highest standards in youth and adult care and is offered to non-profits, community agencies and residential care facilities

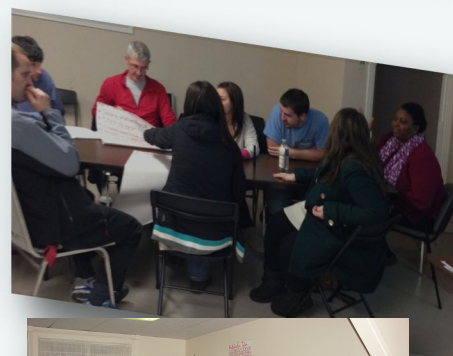
Professional Training Programs

- ETEP
- Food Handling
- Safe Talk
- MANDT
- Mental Health First Aid
- First Aid/CPR



376

STAFF
TRAINED



116

CLIENTS
TRAINED



Transition to Work Training Programs

- Food Handling
- First Aid/CPR
- WHMIS
- Signallers Training



TRANSITION TO WORK TRAINING

A training series designed for clients to gain an "edge" in securing employment. Clients are provided opportunities for specific training related to their job choice.



INNOVATION

Broadening and Sharing Knowledge & Resources

5 GROUPS & ORGANIZATIONS

EXTENDED RESOURCE PROGRAM

(providing volunteer expertise, resources & supports)

Assisting community agencies and groups with resources, such as proposal writing, financial administration, loans, aid, and volunteer staffing to continue their ability to provide vital community services—Seniors Clubs, First Nations Elders, Community Agencies.



3

CONFERENCES / WORKSHOPS

JHS sponsors provincial wide conferences on emerging issues of concern at the local, provincial and federal levels. Emerging issues concerning: Transition to Employment, Mental Health, Addictions, Housing and Education and At Risk Populations such as First Nations, Women, Youth, and Offenders.

John Howard assists in moving forward provincial and federal strategies through partnerships with Government, committees and NGO's.

Recent Conferences / Workshops emphasized CSC Section 84 readiness, Public Safety Community Safety Plans in First Nations Communities in NB and Affiliate Board Development.



COMMUNITY BOARDS & COMMITTEE INVOLVEMENT

JHS staff volunteer with agency boards and local / provincial committees ensuring non-duplication of services and directly contributing to program service funding, implementation and evaluation. In addition, membership allows for cost effective and efficient community needs assessments, initiative development, advocacy and public education.

ALTERNATIVE MEASURES
GENTLE PATH COUNSELLING
SJ COMMUNITY CHAPLAINCY
NB RESTORATIVE JUSTICE
NB YOUTH ACTION NETWORK
MENTAL HEALTH TEAM
CANADIAN MENTAL HEALTH ASS.
VIBRANT COMMUNITIES
GREATER SJ HOMELESSNESS COM.
MAKING WAVES
COVERDALE WOMEN'S CENTRE
YOUTH SERVICES COM.
JHS FRANCOPHONE NETWORK
BEH-JIP-PO-NEN WEJOK-KED-WA-GON

RIDGEWOOD ADDICTIONS
SOCIAL WORKER ASS.
ENDOWED CHAIR IN CRIMINOLOGY
CHAMPIONS FOR YOUTH
PROV. CARING PARTNERSHIP
WESLEYAN CHURCH
AIDS SJ
CENTRE FOR YOUTH CARE
STRENGTHENING FAMILIES ADVISORY
CSC COMMUNITY ADVISORY COM.
DEVELOPMENTAL ASSETS
ATLANTIC RESEARCH & DEVELOPMENT
JHS ANGLOPHONE NETWORK
APOG-ENE-ENEMAT-OOL-TIN-ETJ

SECOND STAGE SAFE HAVEN
NB YOUTH RESIDENTIAL ASSOCIATION
NB ADULT RESIDENTIAL ASSOCIATION
SCHIZOPHRENIA SAINT JOHN CHAPTER
JOHN HOWARD SOCIETY NB
LIVING SAINT JOHN
FAMILY PLUS/LIFE SOLUTIONS
ATLANTIC HALFWAY HOUSE ASS.
PROV. ROUNDTABLE CRIME & PS
ECONOMIC SOCIAL INCLUSION
COMMON FRONT SOCIAL JUSTICE
JHS FIRST NATIONS NETWORK
TURNING LEAF FOUNDATION
GON-GIG-WOM



INNOVATION

Broadening and Sharing Knowledge & Resources

PARTNERSHIPS & ALLIANCES

Partnerships and alliances remain a key strategy to work together with the community on province-wide goals to reduce crime by the promotion of a healthy and safe community. Partnerships in diverse areas include: youth, homelessness, domestic violence, housing, mental health, education, employment, First Nations and women.

MULTI-DISCIPLINARY / MULTI-PARTNER INITIATIVES

The JHS partners with other like agencies, academia and foundations in the development, implementation and evaluation of program services within our region and throughout the province. Multi-partnered initiatives allow for the JHS to ensure program service delivery is well researched to maximize its effectiveness and efficiency in meeting community needs as well as providing extensive, community backed, evaluative measures to ensure program validity.

ADVOCACY / PUBLIC EDUCATION / COMMUNITY MOBILIZATION

JHS is active in advocacy, research, communications, community education, coalition building and resource development within Saint John and other provincial regions.

Through collaborative partnerships with each level of government, schools, community organizations and business the JHS provides links of "What Works" to the decision makers, service delivery agents, service consumers and the general public ensuring a more comprehensive and cost effective level of care system within our society's social safety net.

ACADEMIA



RESEARCH, DEVELOPMENT & EVALUATION

Dr. Susan Reid
Dr. Mary Ann Campbell
Dr. Pierre Ouellette

Dr. Guy Robichaud
Dr. Marie-Andree Pelland
Dr. Don Clairmont

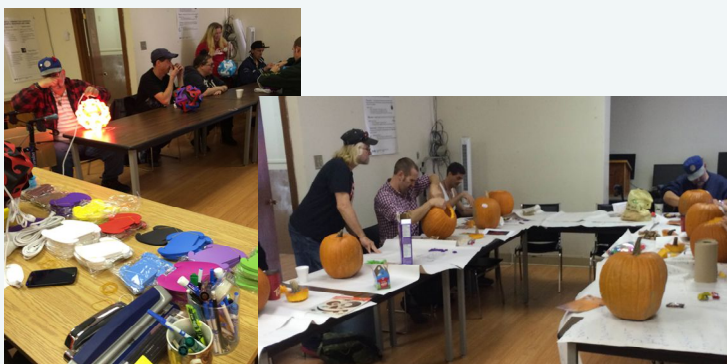
Dr. Lorraine Cox
William Bastarache
Susan O'Neill
Leo Paul Pinet

Service Canada
Health Canada
Human Resources and Skills Development Canada
Department of Public Safety
Correctional Services Canada
Department of Social Development
Dept. of Health & Wellness
Post Secondary Education, Training & Labour
Youth Justice Canada
Aboriginal Justice
Aboriginal Affairs
Anglophone North/South/East/West School Districts
Francophone Nord-Est/Nord-Ouest/Sud School District
Department of Parks & Recreation
RCMP
Rothesay Police Department
Saint John Police Department
Human Development Council
Atlantic Health Sciences Corporation
Ridgewood Addiction Services
Canadian Mental Health Association
Workman's Health & Safety
National Crime Prevention Strategy
John Howard Society of Canada
Atlantic Human Services
Common Front for Social Justice
Bridges of Canada
Elizabeth Fry Society
Mindcare New Brunswick
Saint John Foundation
Muriel McQueen Fergusson Foundation

Social Activities

CHILDRENS CHRISTMAS PARTY

A Christmas celebration for the kids including a visit from Santa. Held each year with Santa's bag filled with plenty of gifts for the children. With all the festivities, food and drinks there was no room for the reindeer who had to stay parked on the rooftop until Santa made his rounds.



ART PROGRAM

Every Friday afternoon has now become even more artistic and professional. The art program is a program open to any individual who is interested in participating in and actively exploring their artistic abilities. Local artists come in twice a month to volunteer and render their services to the individuals who attend. These artists demonstrate to the individuals who attend how to properly draw, doodle, paint and make a wide range of creations.

FREEING THE HUMAN SPIRIT (YOGA PROGRAM)

JHSSJ, in partnership with Coverdale Womens Centre and Elizabeth Fry Society, is consulting with the SJRCC in the implementation of a Yoga Program in the jail. "Freeing the Human Spirit" brings yoga and meditation classes to inmates in prisons across Canada. We support safe communities and the healthy rehabilitation of inmates by teaching them nonviolent skills to cope with trauma, addictions and mental health.



ACADIAN
FRANCOPHONE
BAND

A TRI-CULTURAL, PROVINCIAL-WIDE ORGANIZATION
(FIRST NATIONS, ANGLOPHONE, AND FRANCOPHONE)

FIRST NATIONS
DRUMMERS



1952 - 2017

**A Celebration "IN APPRECIATION" of
Staff, Volunteers, Stakeholders and
Clients**

⇒ In appreciation of Board and Staff innova-

tion making JHSSJ the first John Howard in the country to adopt a healthy and safe community mission in an effort to move from a criminal justice agency to a crime reduction agency - expanding its service base to over 2,000 clients a year.

⇒ In appreciation of JHSSJ's Advocacy position and being the prime mover for the National Office initiating the lawsuit with Correctional Service Canada to abolish solitary confinement for inmates with a severe mental illness.

⇒ In appreciation of being recognized as **"Change Maker" in the community**, through its poverty reduction, employment, skills and education programs, residential services and mental health services.



Advocacy Activities

Provincial Criminal Justice NGO's Advocacy Considerations

Open Custody Youth in Closed Custody Setting

PROBLEM: Youth sentenced to open custody are housed in an institutional setting at the Youth Centre

NEED: Judge determined minimal risk to community with expectation of supervised community setting.

SOLUTION: Open custody settings in which youth attend schools, obtain employment, receive treatment, have recreational options &

6 Open

Custody Youth units
in Closed Custody

80%

Who complete court
do not commit a

PROBLEM: Discriminatory and disproportionate impact on aboriginal, women and people with mental illness / Most austere & depriving form of incarceration

NEED: Require other forms of dealing with complex needs

SOLUTION: Ensure trained staff with appropriate attitudes, behavioral skills are working with vulnerable offenders

**Solitary
Confinement /
Segregation**

Record Suspension

PROBLEM: Too costly and time consuming for offenders to put criminal past behind them and start anew

NEED/SOLUTION: Less costly, unnecessary and counterproductive process

\$631

Plus for fees

40%

Decrease in Ap-
plicants

80%

Who complete court
do not commit a new

PROBLEM: No positive impact on reduced criminal behavior as a result of incarceration / More apt to be victimized in prison

NEED: To address the cause of behaviors not the consequences

SOLUTION: Restore Mental Health Courts across the province

**Mental Health
Courts**

Section 84 Community Readiness

PROBLEM: Aboriginal Communities lack coordination of resources for successful reintegration

NEED: Section 84, encourages Aboriginal communities to be part of the release process.

SOLUTION: Engagement of Elders and key community figures within

23%

Of admissions to
provincial/territorial

147

NB average count in
remand (2014/15)

PROBLEM: High remand use/rates resulting in extensive "side-effects" (e.g., job loss, prison indoctrination, social stigma)

NEED: Reduction in remand rates

SOLUTION: Strategic plan to address the mitigating factors which influence high rates / encouragement of probation services in place

**Remand
Rates**

Partnerships

Over 75 years old, Elizabeth Fry Societies are present in 24 communities



Over 93 years old, Coverdale is provides services across NB and NS



Beginning in the US, Bridges of America is over 44 years old and 4 years ago created Bridges of Canada present across NB



Over 130 years old, the Salvation Army is present in 400



Almost 150 years old, the John Howard Society is present in 65 communities across Canada across NB

John Howard
Over 8 years old, there are 4 Maliseet & Mi'kmaq, John Howard Society Affiliates across NB



Community Impact

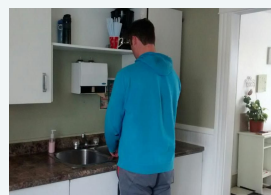
PROVIDER OF CHOICE FOR RESIDENTIAL SERVICES

HOUSING FIRST

A **principle** whereby people are better able to move forward with their lives if they are first housed. Clients experiencing homelessness, mental health and addictions issues are provided a residence with wrap-around supports and services (mental health, education, employment, substance abuse and community connections).

CASE MANAGED SUPPORT

A **philosophy** and an **approach** to provide services within a residential setting where people requiring complex care can maintain control over their lives while also receiving the support they need for their safety and security.



"STANDARDS OF EXCELLENCE" IN YOUTH SERVICES

BEST PRACTICES

A well known reputation recognized by provincial government departments in the expertise and delivery of youth residential and youth program services. Providing nationally and internationally accredited "Best Practice" services for youth with involvement of their families.

Meeting Federal and Provincial "Benchmarks" in:

- Professional Standardized Staff Training,
- Positive Youth Development & Strength Based Approaches,
- Screening for Service of Vulnerable, High Risk, and Complex Youth,
- Proactive and Comprehensive (Integrated) Interventions with Family,
- Linkages with an Integrated Array of Simultaneous Services,
- Services Comprehensive of Root Causes and Tailored to Local "Real" Circumstances
- Evaluative Measures of Outputs and Outcomes (Logic Model Design)

LEADERS IN MENTAL HEALTH RESIDENTIAL SERVICES FOR YOUTH / ADULTS

MULTI-DISCIPLINARY TEAM

Utilizing a multi-disciplinary team made up of specialists which wrap around residences for those youth and adults accessed as "complex" and requiring extensive supervision and supports.

YOUTH

1st Specialized Youth Treatment Facility for youth considered our most vulnerable in our society, often presenting with challenging behaviours which are a manifestation of unmet complex needs. The home provides 'special protections' which include a range of coordinated multi-disciplinary specialized residential and support services.

ADULT

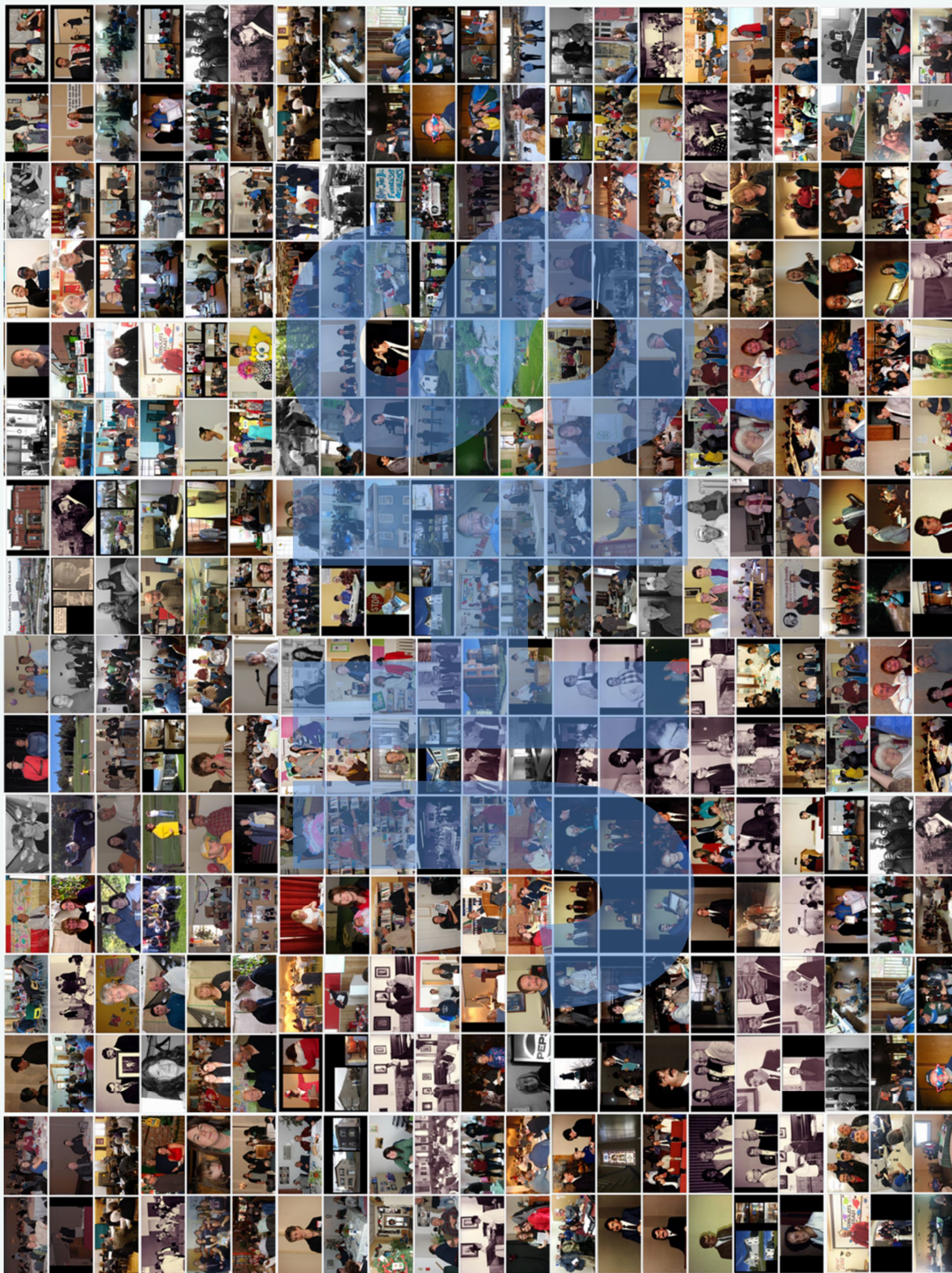
1st Specialized Adult Residential Home for Adults with severe mental illness requiring intensive supervision and supports

65 YEARS OF SERVICE

SAINT JOHN, KINGS COUNTY
& CHARLOTTE COUNTY

PICTURE MOSAIC





AWARDS & PRESENTATIONS



THANK YOU TO OUR SPONSORS



Public Safety
 Youth Justice National Anti-Drug Strategy
 Correctional Service of Canada
 Department of Justice
 National Crime Prevention Strategy
 Aboriginal Justice
 Health Canada
 Service Canada
 Human Resources and Skills Development



Social Development
 Post Secondary Education, Training & Labour
 Education
 Public Safety

OFFICES

Saint John Branch
 68 Carleton Street
 Saint John, N.B., E2L 2Z4
 P: (506) 657-5547
 F: (506) 649-2006
 E: info@johnhowardsj.ca

Peters Street Satellite Office
 44 Peters Street
 Saint John, N.B.
 P: (506) 657-5547

Hart Residential Centre
 120 Carleton Street
 Saint John, N.B., E2L 2Z7
 P: (506) 643-2013
 F: (506) 643-2017
 E: rhines@jhsnb.ca

GrantHome
 4 Josselyn Road
 Saint John, N.B., E2L 2Z7
 P: (506) 696-4233
 F: (506) 696-0266
 E: pjackson@jhsnb.ca

Maloney Home
 255 Loch Lomond Dr.
 Saint John, N.B., E2L 2Z7
 P: (506) 642-2526
 F: (506) 657-2577
 E: jmilllett@jhsnb.ca

Douglas Lake Treatment Centre
 3830 Loch Lomond Rd.
 Saint John, N.B., E2N 1C4
 P: (506) 693-3337
 F: (506) 693-3301
 E: slapointebooy@jhsnb.ca

Webster Home
 Duke Street
 Saint John, N.B.
 P: (506) 642-3595
 E: chodgson@jhsnb.ca

Adelaide Street Home
 51 Anglin Dr.
 Saint John, NB
 P: (506) 657-7432
 F: (506) 6547-4412
 E: Avalardo@jhsnb.ca

Satellite Offices

Charlotte County
 123 Milltown Blvd.
 St. Stephen NB
 P: (506) 469-4019

John Howard
 THE JOHN HOWARD SOCIETY OF SAINT JOHN
 La SOCIÉTÉ JOHN HOWARD DE SAINT JOHN

